

22

Three horizontal number lines illustrating the addition of fractions:

- Line 1: $21 \frac{1}{100} + 5.66 = 21 \frac{1}{100} + 5 \frac{66}{100} = 26 \frac{67}{100}$
- Line 2: $21 \frac{1}{10} + 5.46 = 21 \frac{1}{10} + 5 \frac{46}{100} = 26 \frac{47}{50}$
- Line 3: $21 \frac{1}{100} + 1.39 = 21 \frac{1}{100} + 1 \frac{39}{100} = 22 \frac{40}{100} = 22 \frac{2}{5}$

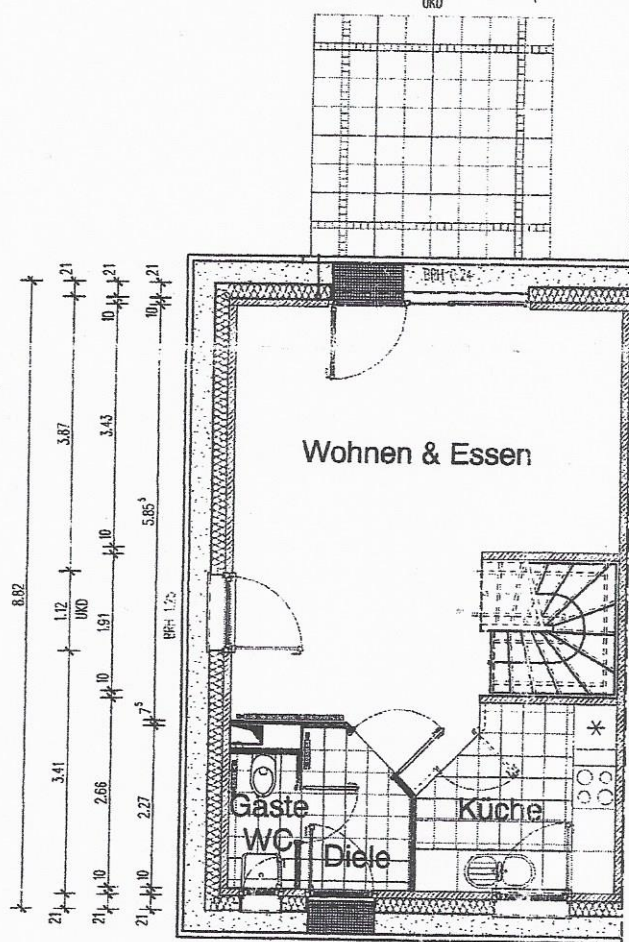


Figure 1: Schematic diagram of the test system. The diagram shows three horizontal tracks with various points and labels. The top track has points labeled 21, 26.5, 62, 31.5, 1.01 UKD, 1.64, 1.12 UKD, and 69. The middle track has points labeled 21, 10, 95, 1.55, 7.5, 2.81, and 10. The bottom track has points labeled 21, 5.66, and 2. A final point labeled 5.89 is shown below the bottom track.

Three horizontal number lines are shown, illustrating the addition of fractions. The first line shows the sum of $\frac{1}{2}$ and $\frac{5}{6}$ resulting in 2. The second line shows the sum of $\frac{1}{10}$ and $\frac{5}{6}$ resulting in $\frac{10}{6}$. The third line shows the sum of $\frac{1}{40}$ and $\frac{2}{87}$ resulting in $\frac{139}{1740}$.

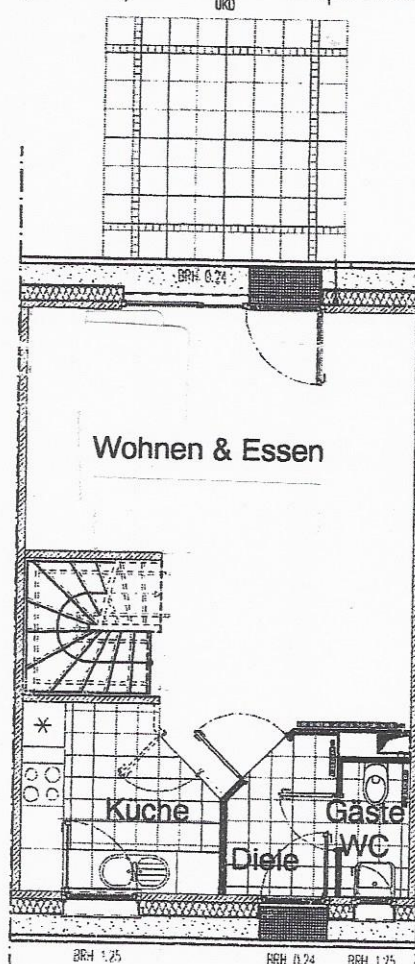
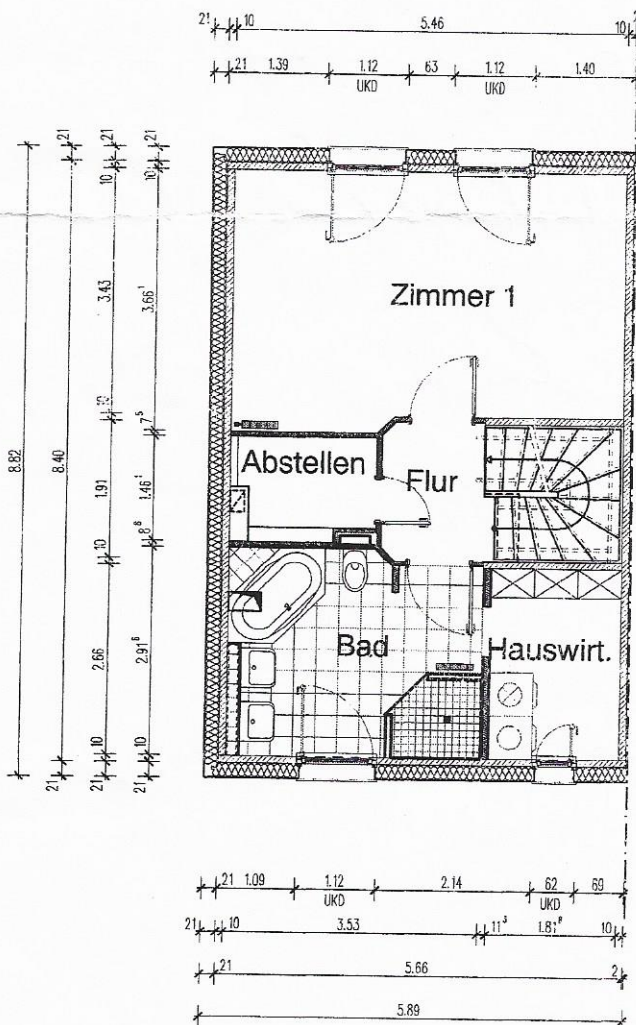


Figure 1 shows a schematic diagram of a four-bar linkage mechanism. The mechanism consists of four links: a fixed frame (link 1), a crank (link 2), a coupler (link 3), and a rocker (link 4). The joints are revolute joints. The dimensions are given in inches (in). The crank length is 1.12 in, the coupler length is 1.64 in, and the rocker length is 1.01 in. The ground link length is 1.01 in. The crank is labeled with 'UKD' and '31°'. The coupler is labeled with '7.5°'. The rocker is labeled with '62°' and '26°'. The ground link is labeled with '10' and '1.55'. The crank is labeled with '2' and '5.66'. The coupler is labeled with '5.70'.

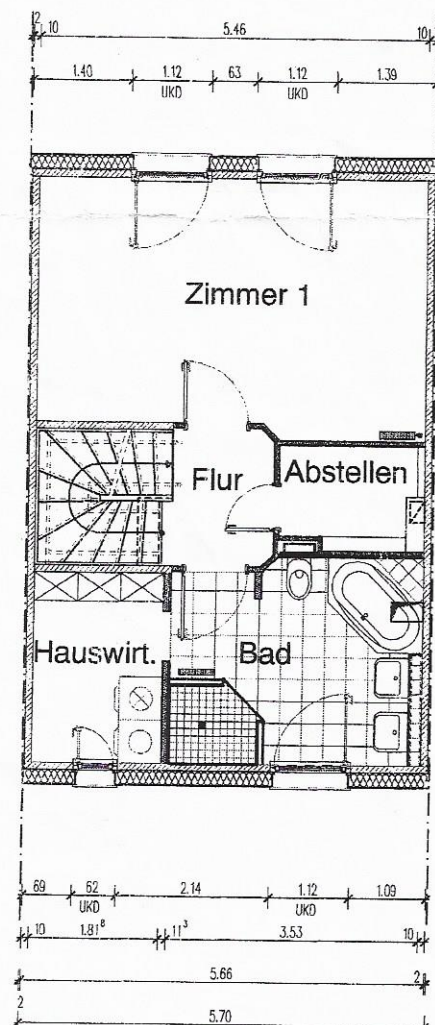
Mittelhaus

21. 4707183

**Bankplansatz
Haustyp 116
Grundriss OG**



Endhaus

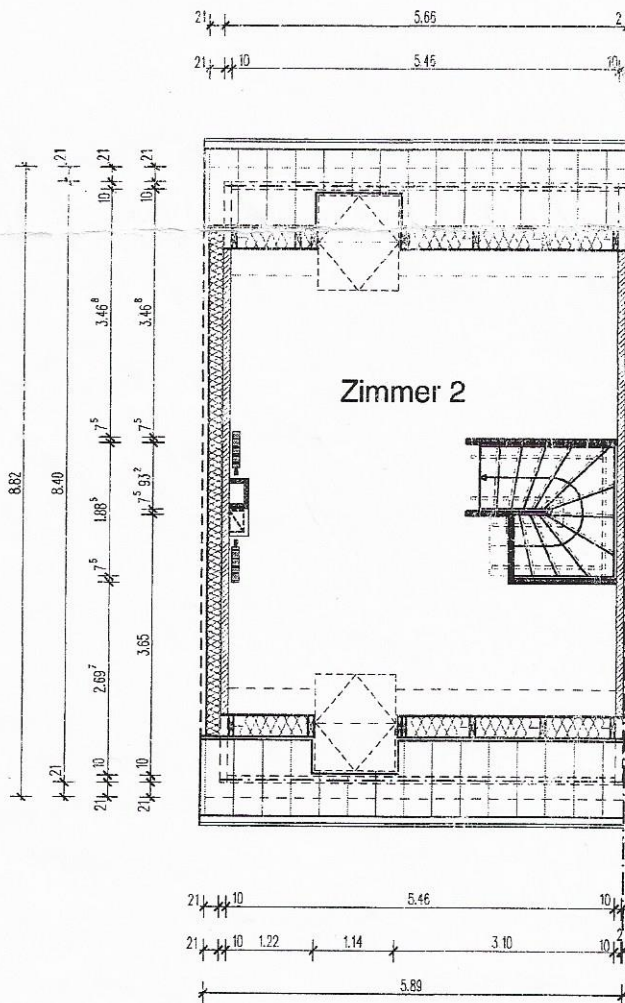


Mittelhaus

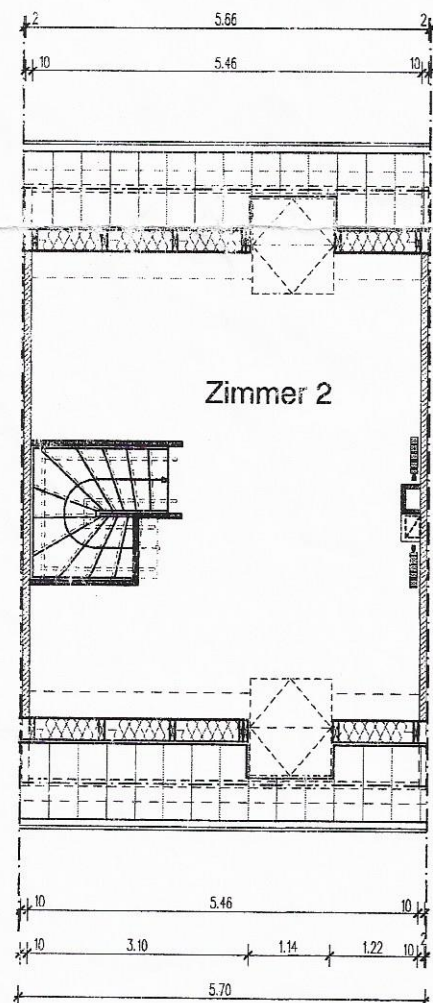
**DEUTSCHE
REIHENHAUS AG**
Wir bauen Ihr Zuhause

21.4707184

**Bankplansatz
Haustyp 116
Grundriss DG**



Endhaus



Mittelhaus

**DEUTSCHE
REIHENHAUS AG**

Wir bauen Ihr Zuhause